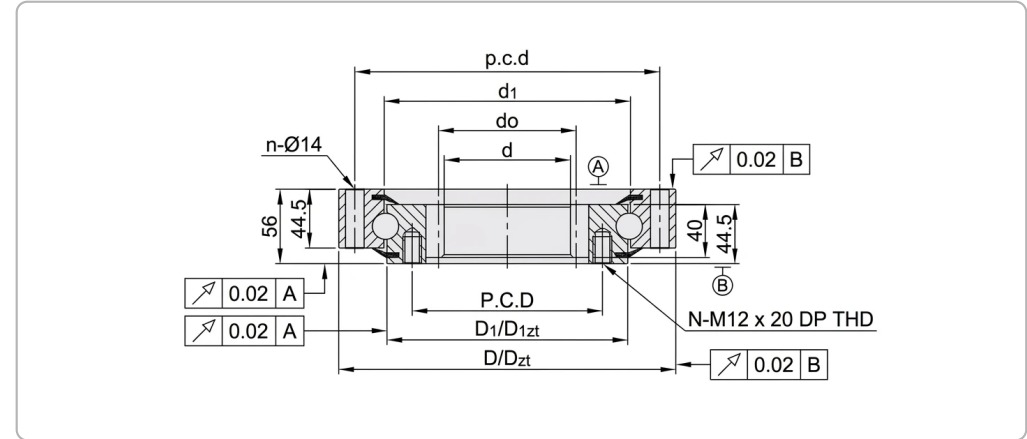




Product View



Section Drawing

Technical Parameters

Parameter	Value
Contact Type	4-Point Contact
Gear Type	External Gear Type
Precision Class	P5
Sealing	Rubber seals on both sides
Material	SUJ2 (GCr15)
Operating temperature	-20°C to +80°C
Running Accuracy	Radial & Axial Run-out ≤ 0.02 mm
Raceway Hardness	58-62 HRC
Bore Diameter (d)	672 mm
Bore Diameter tolerance	0.6mm to 0
Height (H)	56 mm
Outside Diameter (D)	838.1 mm
Width outer ring (ha)	44.5 mm
Width inner ring (hi)	44.5 mm
Width gearing (b)	40 mm
Outer Ring Pilot Diameter (Dzt)	674 mm
Inner diameter outer ring (d1)	745.5 mm
Inner diameter outer ring tolerance	0.6mm to 0
Outside diameter inner ring (D1)	742.5 mm

Parameter	Value
Outside diameter inner ring tolerance	0.6mm to 0
Inner Ring Pilot (D1zt)	747 mm
Pitch circle diameter gearing (do)	828 mm
Module of gearing (M)	6 mm
Number of teeth (Z)	138
Pressure Angle	20°
Pitchcircle diameter fixing holes outer ring (p.c.d)	785 mm
Number of fixing holes in outer ring (n)	36
Fixing bore	14 mm
Pitchcircle diameter fixing holes inner ring (P.C.D)	698 mm
Number of fixing holes in inner ring (n)	40
Threaded fixing bore	M12
Thread depth fixing hole	20 mm
Basic dynamic load rating, axial (Ca)	211 KN
Basic static load rating, axial (C0a)	1010 KN
Basic dynamic load rating, radial (Cr)	138 KN
Basic static load rating, radial (C0r)	445 KN
Radial Clearance	0-0.05 mm
Axial Clearance	0-0.08 mm