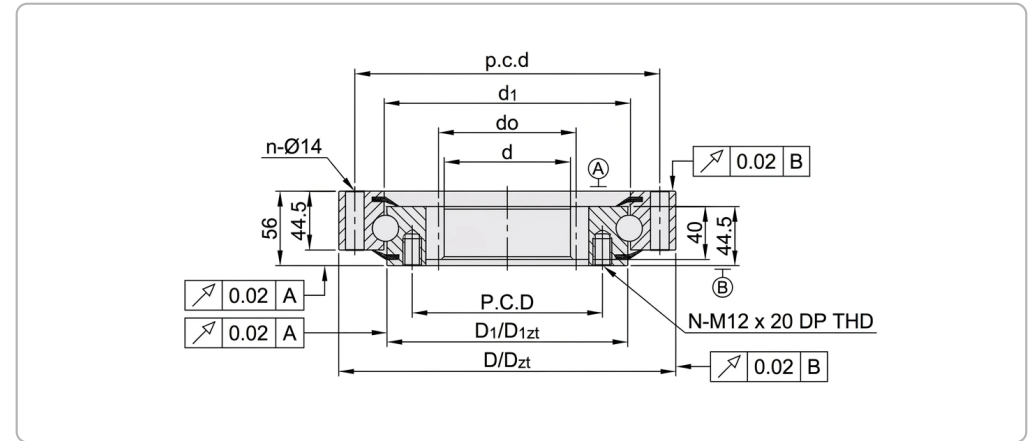




Product View



Section Drawing

Technical Parameters

Parameter	Value
Contact Type	4-Point Contact
Gear Type	External Gear Type
Precision Class	P5
Sealing	Rubber seals on both sides
Material	SUJ2 (GCr15)
Operating temperature	-20°C to +80°C
Running Accuracy	Radial & Axial Run-out ≤ 0.02 mm
Raceway Hardness	58-62 HRC
Bore Diameter (d)	572 mm
Bore Diameter tolerance	0.6mm to 0
Height (H)	56 mm
Outside Diameter (D)	742.3 mm
Width outer ring (ha)	44.5 mm
Width inner ring (hi)	44.5 mm
Width gearing (b)	40 mm
Outer Ring Pilot Diameter (Dzt)	574 mm
Inner diameter outer ring (d1)	645.5 mm
Inner diameter outer ring tolerance	0.6mm to 0
Outside diameter inner ring (D1)	642.5 mm

Parameter	Value
Outside diameter inner ring tolerance	0.6mm to 0
Inner Ring Pilot (D1zt)	647 mm
Pitch circle diameter gearing (do)	732 mm
Module of gearing (M)	6 mm
Number of teeth (Z)	122
Pressure Angle	20°
Pitchcircle diameter fixing holes outer ring (p.c.d)	685 mm
Number of fixing holes in outer ring (n)	32
Fixing bore	14 mm
Pitchcircle diameter fixing holes inner ring (P.C.D)	598 mm
Number of fixing holes in inner ring (n)	36
Threaded fixing bore	M12
Thread depth fixing hole	20 mm
Basic dynamic load rating, axial (Ca)	200 KN
Basic static load rating, axial (C0a)	880 KN
Basic dynamic load rating, radial (Cr)	131 KN
Basic static load rating, radial (C0r)	385 KN
Radial Clearance	0-0.05 mm
Axial Clearance	0-0.08 mm